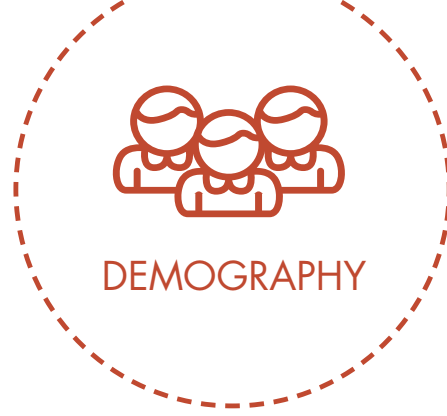


INSIGHT AT A GLANCE



ECONOMIC
FUNDAMENTALS



LABOUR
MARKET
EFFICIENCY



BUSINESS
SOPHISTICATON



HUMAN
CAPITAL



INFRASTRUCTURE
& ESSENTIAL
SERVICES



INSTITUTIONAL
FOUNDATIONS



INNOVATION



TECHNOLOGICAL
READINESS



DEMOGRAPHY



NATURAL
RESOURCES

Regions with large populations, steady growth, low turnover and a large proportion of working aged citizens are best positioned to compete and succeed.

OVERALL TRENDS

Most regional Australians live and work in the network of regional cities located throughout the south-east side of the country, extending up the east coast and into northern Australia.

The competitive Demography of Australia's regional cities cannot be ignored.

OUR GREATEST COMPETITIVE CHALLENGE – NORTHERN AUSTRALIA

Northern Australia's population is young, dynamic and growing with a network of competitive Regional Cities and Industry and Service Hubs that have facilitated the resources boom. Demography is one potential source of competitive advantage that is often overlooked in this part of regional Australia.

A key test for the northern development agenda is whether we can leverage the recent growth and future 'demographic dividend' of young people in the north. Previous work by the Regional Australia Institute on the competitiveness of northern Australia shows that translating this advantage into future prosperity will be a significant challenge. This is supported by the findings in other *[In]Sight* themes such as Human Capital.

KEY STATISTICS

4.3
MILLION
AUSTRALIANS
LIVE IN
REGIONAL CITIES

31
PER CENT
OF NORTHERN
AUSTRALIA'S
POPULATION IS
UNDER 16 YEARS

57
REGIONAL
- LGAs -
ARE GROWING
FASTER THAN
SYDNEY

NORTHERN
AUSTRALIA LGAs
2x
GROWTH RATE
OF THE REST
OF REGIONAL
AUSTRALIA



ECONOMIC
FUNDAMENTALS



LABOUR
MARKET
EFFICIENCY



BUSINESS
SOPHISTICATON



HUMAN
CAPITAL



INFRASTRUCTURE
& ESSENTIAL
SERVICES



INSTITUTIONAL
FOUNDATIONS



INNOVATION



TECHNOLOGICAL
READINESS



DEMOGRAPHY



NATURAL
RESOURCES

TOP 10

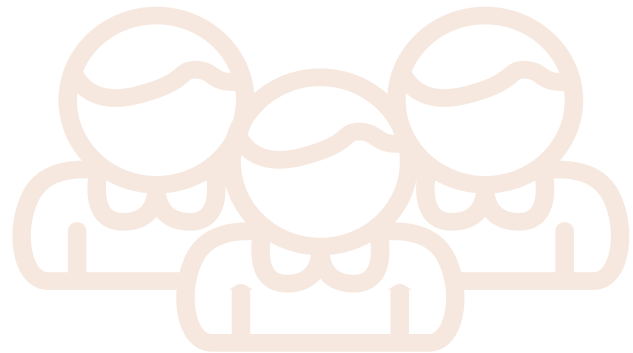
RANKED REGIONAL LGAs

1. **NEWCASTLE, NSW**
Regional Cities
2. **GOLD COAST, QLD**
Regional Cities
3. **DARWIN, NT**
Regional Cities
4. **WOLLONGONG, NSW**
Regional Cities
5. **IPSWICH, QLD**
Regional Cities
6. **LAKE MACQUARIE, NSW**
Regional Cities
7. **TOWNSVILLE, QLD**
Regional Cities
8. **GREATER GEELONG, VIC**
Regional Cities
9. **CAIRNS, QLD**
Regional Cities
10. **HOBART, TAS**
Regional Cities

TOP 5

REGIONS

1. **GOLD COAST, QLD**
2. **ILLAWARRA, NSW**
3. **HUNTER, NSW**
4. **CENTRAL COAST, NSW**
5. **SUNSHINE COAST, QLD**



HOW [IN]SIGHT MEASURES DEMOGRAPHIC COMPETITIVENESS

Population size

More populous regions have larger internal economies and more diverse business communities.

Population growth

Growing populations mean an expanding workforce and economy.

Population density

Dense populations mean making and maintaining connections is easier.

Population turnover

Stable populations provide the foundations for rich social capital and leadership.

Senior dependency

Many older residents means fewer workers to drive the economy.

Youth dependency

Areas with many young people have fewer workers to drive the economy.



REGIONAL
AUSTRALIA
INSTITUTE

t 02 6260 3733
www.regionalaustralia.org.au

🐦 @RegionalAus
📘 The Regional Australia Institute